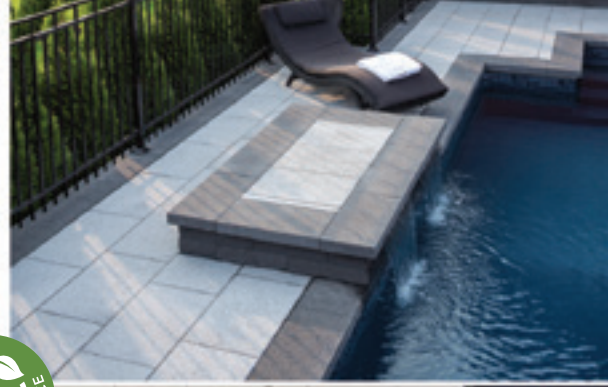


# Prestige™ Paver and Slab

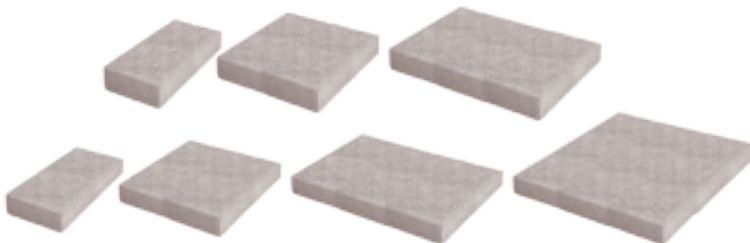


## Classicism and elegance!

With its well-defined plane surfaces, this square-shaped paver and slabs fits well with contemporary, refined decors.

## Characteristics

- 3 <sup>1</sup>/<sub>8</sub> inches (8 cm) thick pavers.
- 2 <sup>1</sup>/<sub>2</sub> inches (6.5 cm) thick slabs.
- Available in a Grenart finish.
- Choice of solid and contrasting colors. 3 paver colors and 4 slab colors.
- Different sizes for a greater variety of patterns.



# BOLDUC

Fashioned in line with nature!

**TECHNICAL**

**SPEC SHEET**

**Leed Certified Pavers and Slabs**

Leed-certified solar reflectance index  
(Granite Gray, Light Gray and Ivory)

# Prestige™ Paver and Slab

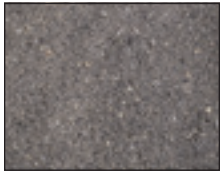
**PAVERS COLORS**



Granite Gray



Light Gray



Anthracite

**SLABS COLORS**



Granite Gray



Light Gray



Anthracite



Ivory

**NOTE:**

We recommend that you make your final choice with actual samples.

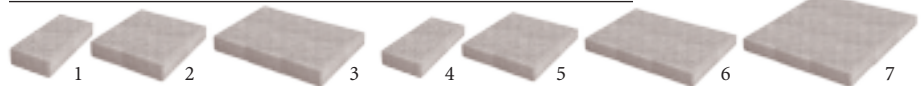
When installing Granite Gray, Light Gray, Anthracite or Ivory pavers and slabs, we recommend covering them with a membrane to protect from dirt and grime. Walk on the protective membrane during installation to prevent staining or spotting.

We also recommend using a Teflon-coated vibrating plate on pavers or slabs during installation, to protect stone surfaces.

Once Prestige pavers or slabs have been installed and properly cleaned, we recommend applying a sealer for easier maintenance.

**NOMINAL DIMENSIONS**

HEIGHT X WIDTH X LENGTH	NUMBER OF PIECES			
	in.	cm	/ft <sup>2</sup>	/m <sup>2</sup>
<b>Pavers</b>				
1. 3 <sup>1</sup> / <sub>8</sub> x 7 <sup>7</sup> / <sub>8</sub> x 15 <sup>3</sup> / <sub>4</sub>	8 x 20 x 40	1,2	12,5	
2. 3 <sup>1</sup> / <sub>8</sub> x 15 <sup>3</sup> / <sub>4</sub> x 15 <sup>3</sup> / <sub>4</sub>	8 x 40 x 40	0,6	6,3	
3. 3 <sup>1</sup> / <sub>8</sub> x 15 <sup>3</sup> / <sub>4</sub> x 23 <sup>5</sup> / <sub>8</sub>	8 x 40 x 60	0,4	4,2	
<b>Slabs</b>				
4. 2 <sup>1</sup> / <sub>2</sub> x 7 <sup>7</sup> / <sub>8</sub> x 15 <sup>3</sup> / <sub>4</sub>	6,5 x 20 x 40	1,2	12,5	
5. 2 <sup>1</sup> / <sub>2</sub> x 15 <sup>3</sup> / <sub>4</sub> x 15 <sup>3</sup> / <sub>4</sub>	6,5 x 40 x 40	0,6	6,3	
6. 2 <sup>1</sup> / <sub>2</sub> x 15 <sup>3</sup> / <sub>4</sub> x 23 <sup>5</sup> / <sub>8</sub>	6,5 x 40 x 60	0,4	4,2	
7. 2 <sup>1</sup> / <sub>2</sub> x 23 <sup>5</sup> / <sub>8</sub> x 23 <sup>5</sup> / <sub>8</sub>	6,5 x 60 x 60	0,3	2,8	



**DIMENSIONAL TOLERANCES †**

The permitted dimensional tolerances prescribed by in the CSA A231.2, CSA A231.1 standard are the following:  
 Length : -1/32 in. to + 5/64 in. (-1 mm to +2 mm)  
 Width : -1/32 in. to + 5/64 in. (-1 mm to +2 mm)  
 height : ± 1/8 in. (± 3 mm)

**WEIGHT: PAVERS: 37,26 lb/sq. ft. (182 kg/m<sup>2</sup>) SLABS: 30,5 lbs/sq. ft. (149 kg/m<sup>2</sup>)**

**PHYSICAL CHARACTERISTICS † (PAVERS)**

COMPRESSIVE STRENGTH**	DURABILITY TO FREEZE-THAW CYCLES WITH UTILISATION IN SALINE SOLUTION**	WATER ABSORPTION
7250 Psi (50 Mpa)	Maximum loss of initial weight in saline solution (NaCl 3%): • 0.74oz / pi2 (225 g/m2) after 28 cycles • 1.64oz / pi2 (500 g/m2) after 49 cycles	5% maximum

**PHYSICAL CHARACTERISTICS † (SLABS)**

FLEXURAL (TRANSVERSE) STRENGTH*	DURABILITY TO FREEZE-THAW CYCLES WITH UTILISATION IN SALINE SOLUTION*	WATER ABSORPTION
653 Psi (4,5 Mpa)	Maximum loss of initial weight in saline solution (NaCl 3%): • 1.64oz / pi2 (500 g/m2) after 28 cycles • 3.93oz / pi2 (1200 g/m2) after 49 cycles	6% maximum

**SPECIFICATION CLAUSE**

**SPEC. NOTE:** Include the following article in part 2- Products of section 32 14 13-Precast Concrete Pavers. It prescribes the choice for BOLDUC Pavers or Slabs for landscaping purposes. It should describes the geometric and physical characteristics and, also, the type, the dimensions, the color and the Grenart finish.

**PART 2 - PRODUCTS**

**2.1 Precast Concrete Pavers**

- 1 Precast concrete pavers complying with CSA A231.2 and the following prescriptions.
- 2 Concrete slab complying with CSA-A 231.1 standard and the following prescriptions.

.3 Prestige™ pavers and slabs as supplied by BOLDUC.

- 1 Thickness: \_\_\_\_\_
- 2 Nominal Dimensions: \_\_\_\_\_
- 3 Color: \_\_\_\_\_
- 4 Texture: Grenart finish

**INSTALLATION**

Refer to the technical service or to Bolduc's website at [www.bolduc.ca](http://www.bolduc.ca) to obtain the model specification, installation guide or any other technical information.

† Copies of lab tests are available upon request.

\*\* Tests performed as per CSA A231.2

\* Tests performed as per CSA A231.1



**BOLDUC**  
Concrete product manufacturer

1358-2nd Street, Industrial Park,  
Sainte-Marie, Beauce, Québec, Canada G6E 1G8

Sainte-Marie: (418) 387-2634  
 Toll free Canada: 1-800-463-8966  
 Toll free USA: 1-800-603-5567  
 Fax: (418) 387-6438  
[www.bolduc.ca](http://www.bolduc.ca)  
[www.bolduc.us](http://www.bolduc.us)  
[info@bolduc.ca](mailto:info@bolduc.ca)